

New Braunfels

Guadalupe

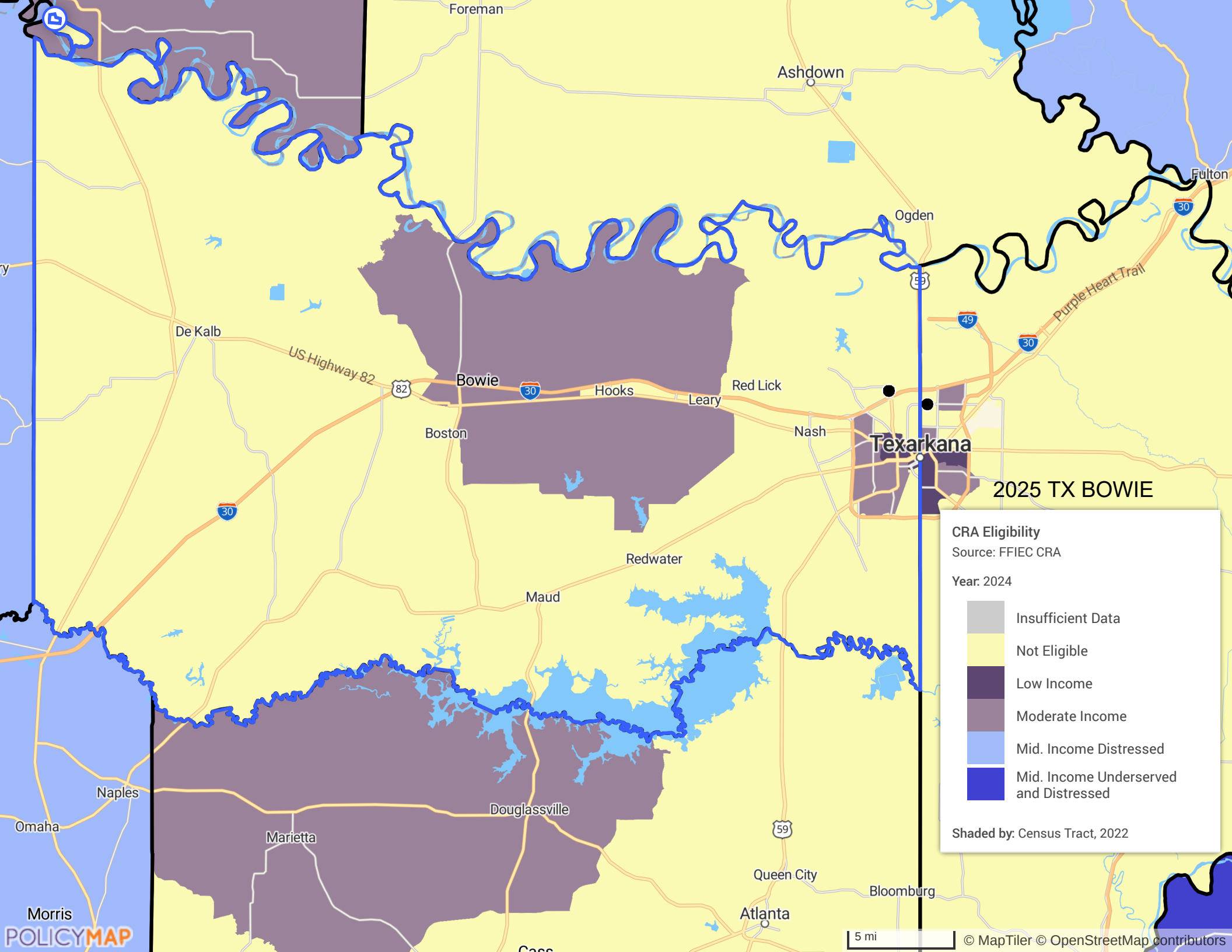
Seguin

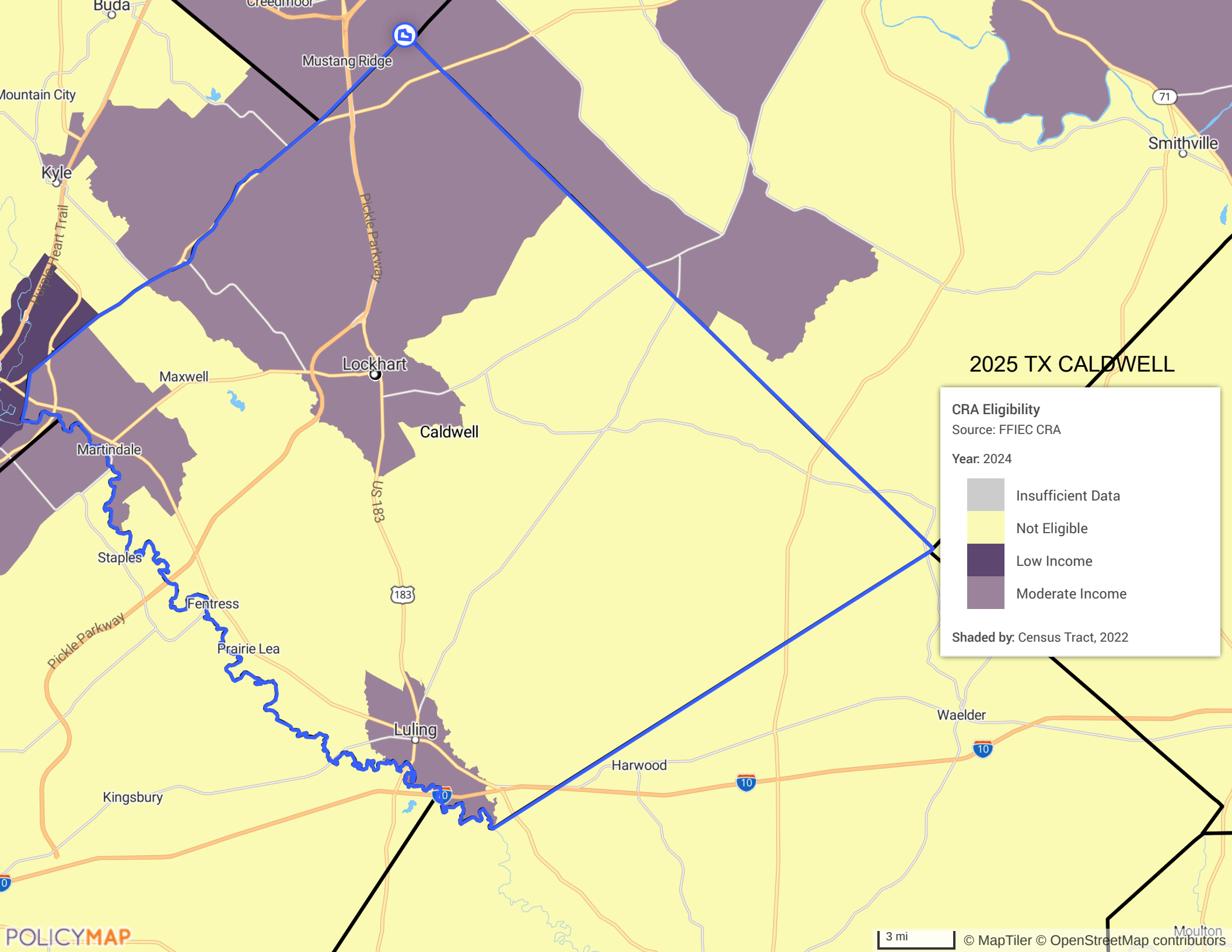
2025 TX BEXAR

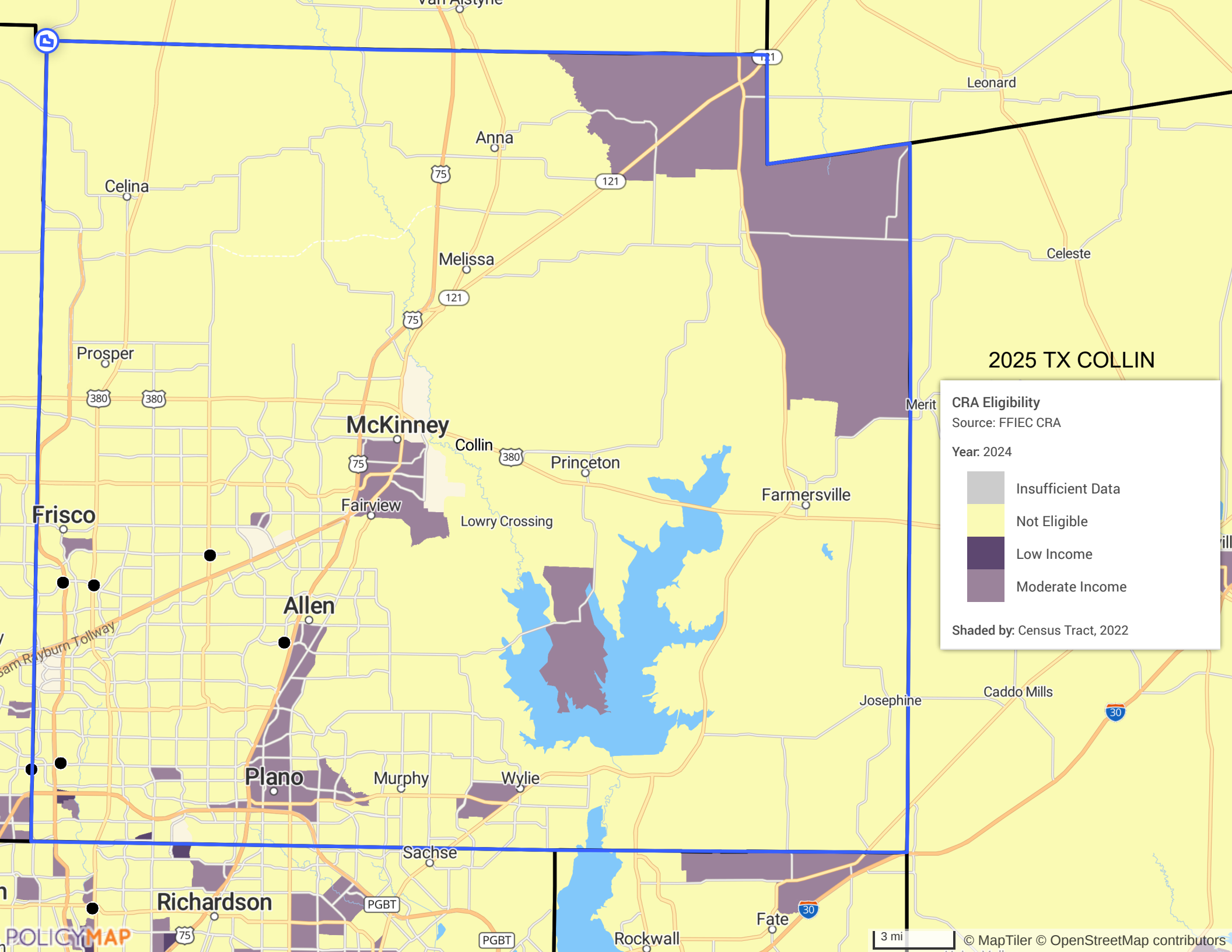
CRA Eligibility
 Source: FFIEC CRA
 Year: 2024

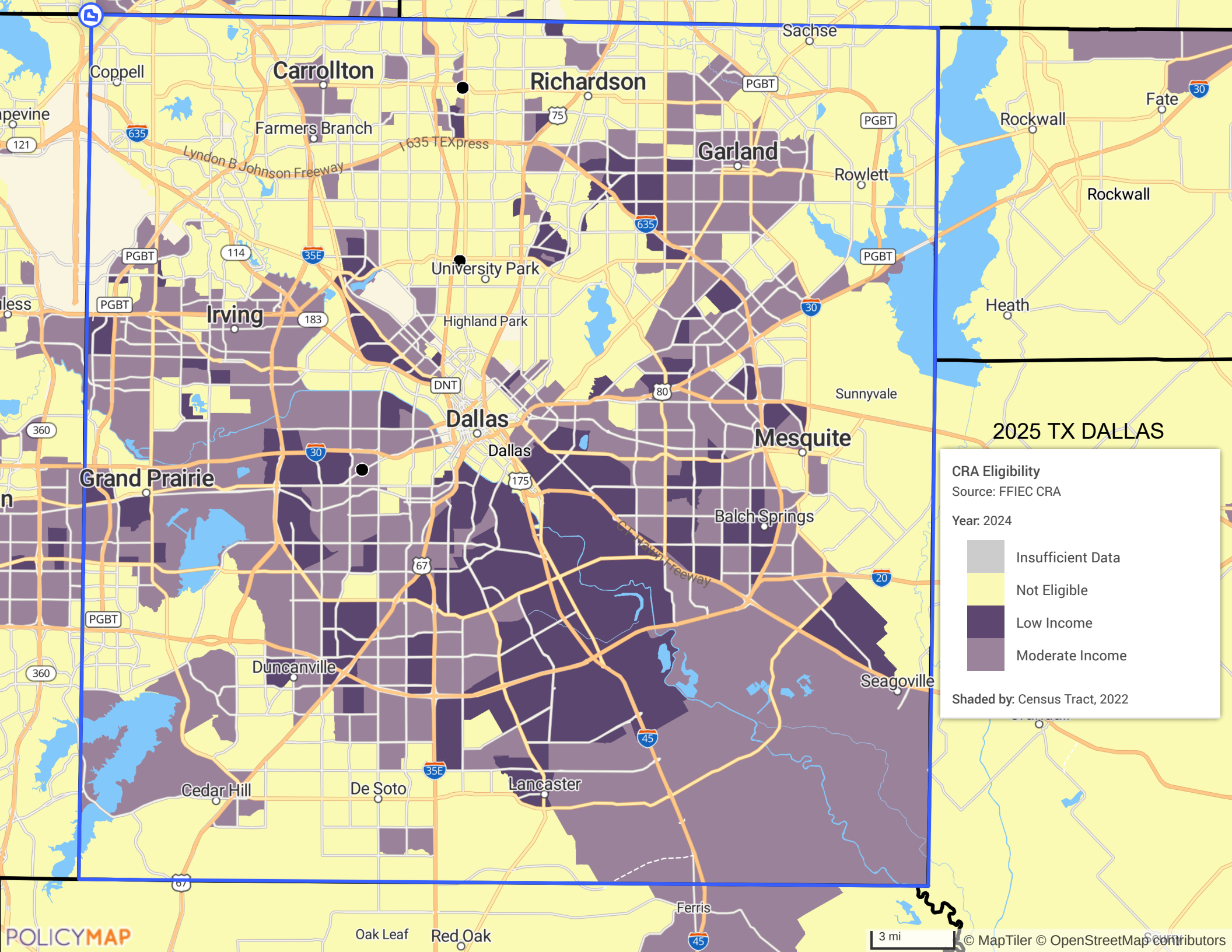
- Insufficient Data
- Not Eligible
- Low Income
- Moderate Income
- Mid. Income Distressed

Shaded by: Census Tract, 2022







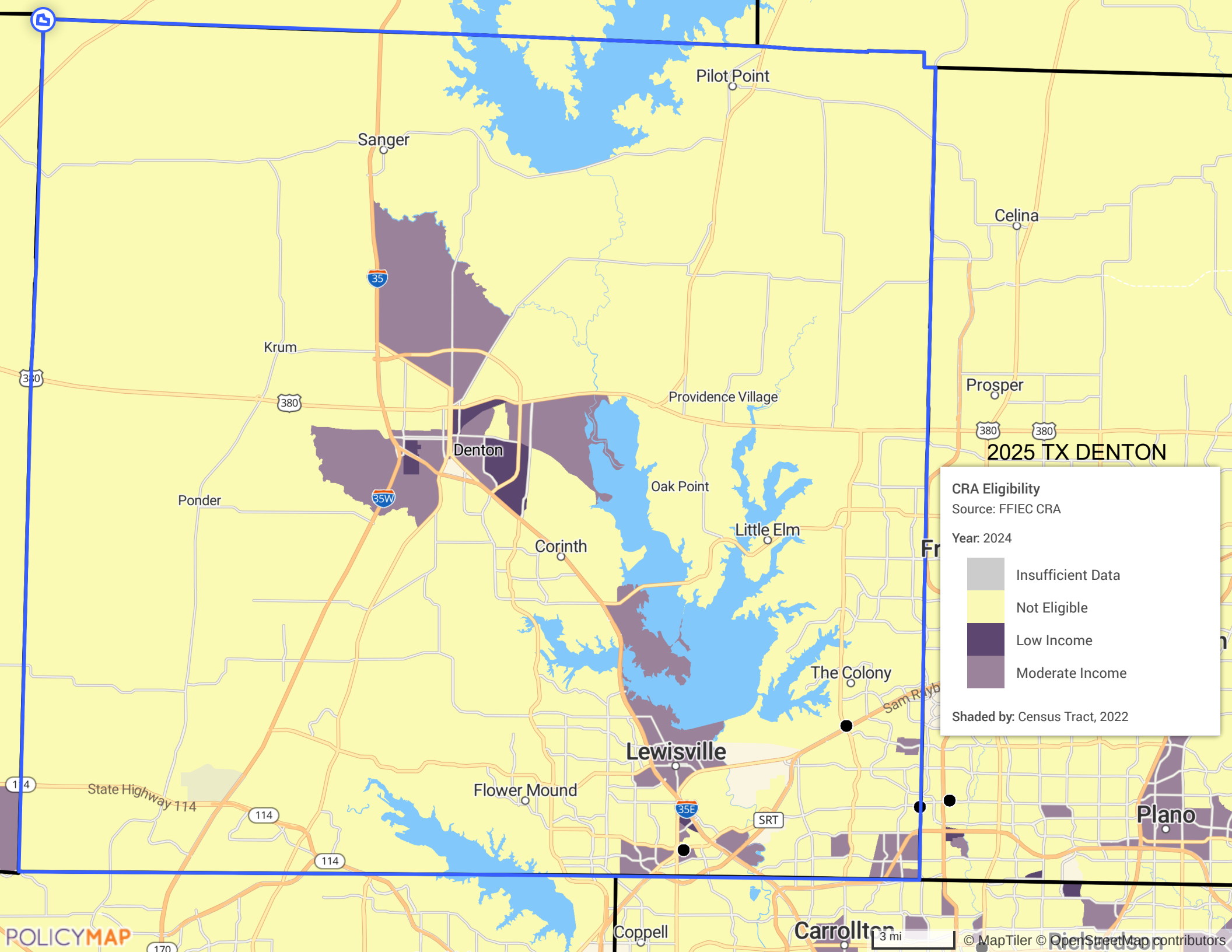


2025 TX DALLAS

CRA Eligibility
Source: FFIEC CRA
Year: 2024

- Insufficient Data
- Not Eligible
- Low Income
- Moderate Income

Shaded by: Census Tract, 2022

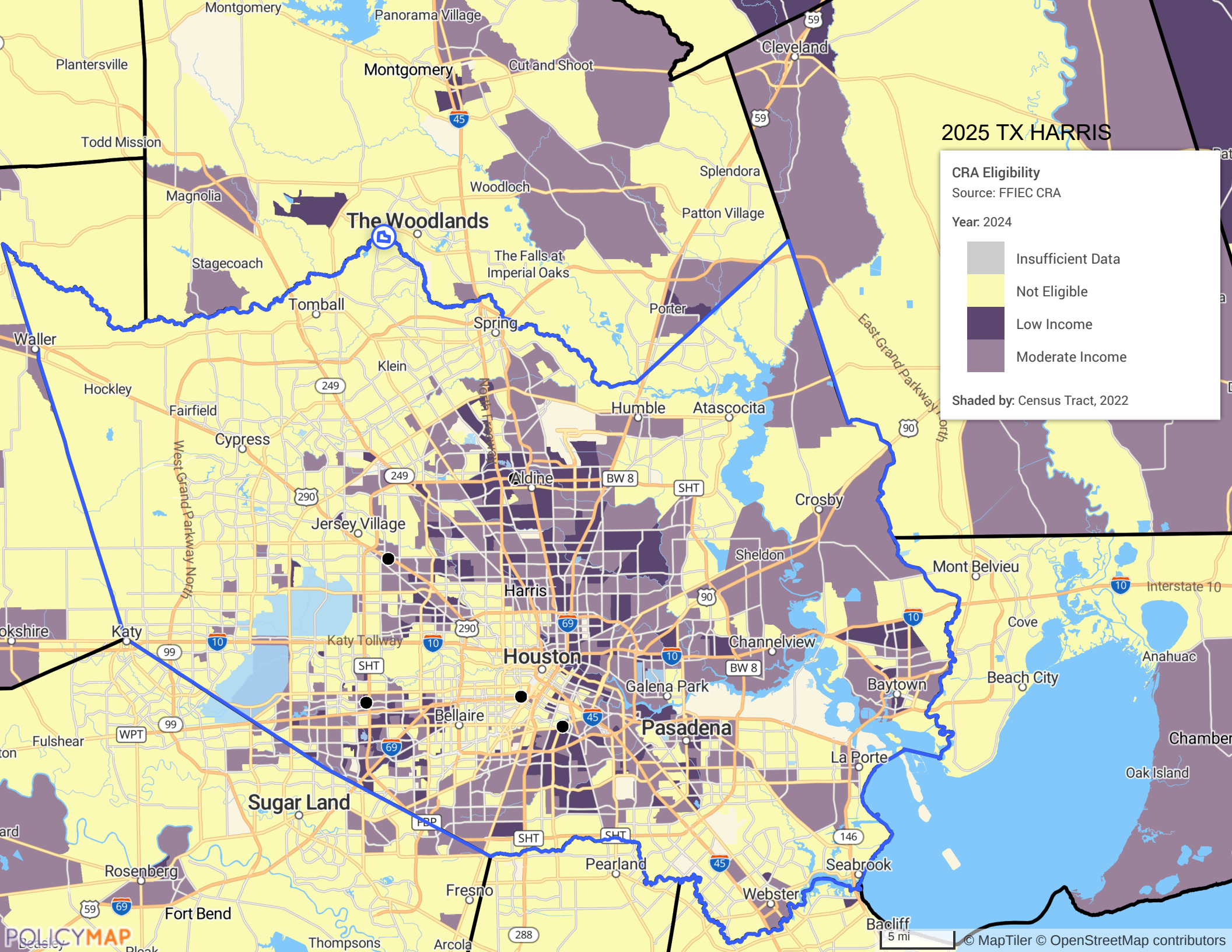


2025 TX DENTON

CRA Eligibility
Source: FFIEC CRA
Year: 2024

- Insufficient Data
- Not Eligible
- Low Income
- Moderate Income

Shaded by: Census Tract, 2022

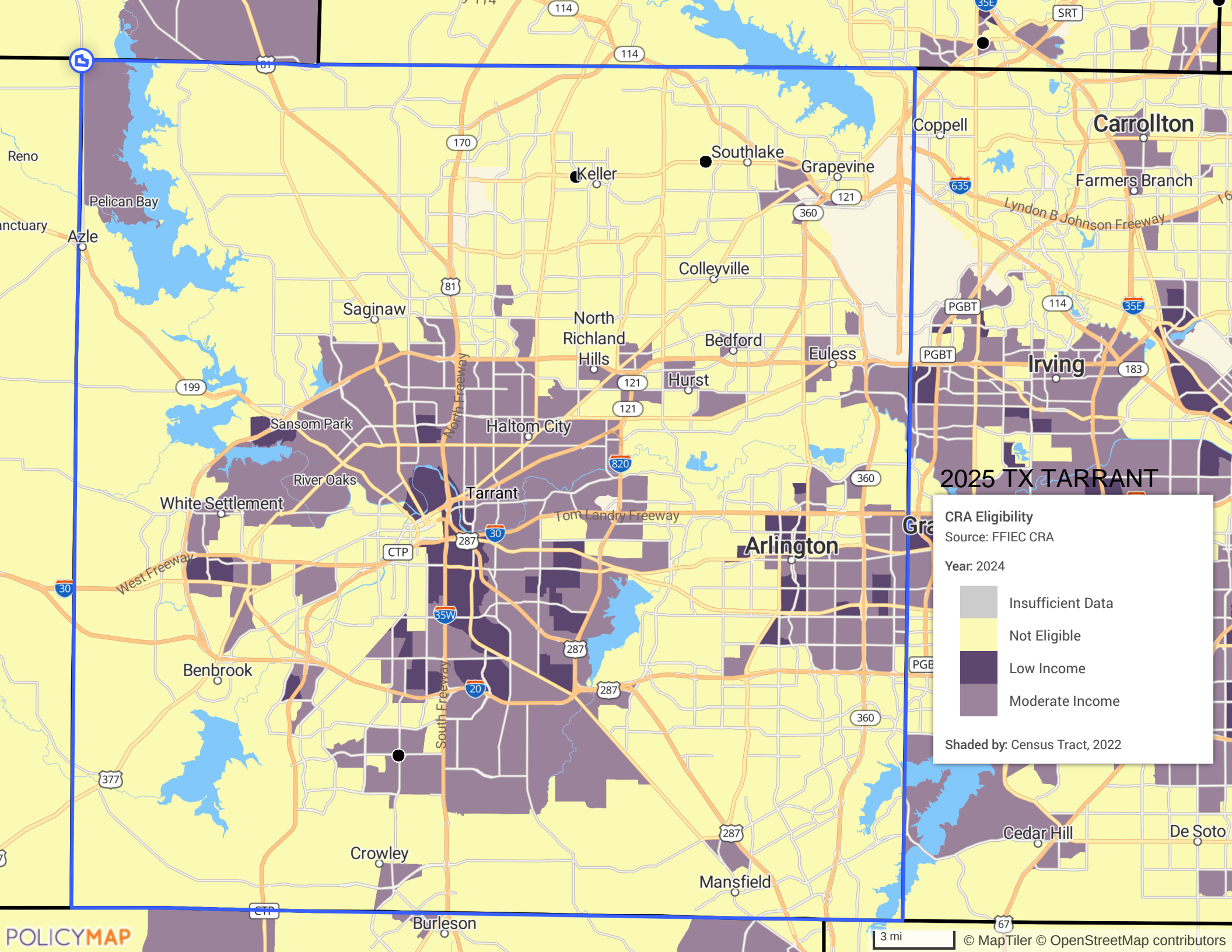


2025 TX HARRIS

CRA Eligibility
Source: FFIEC CRA
Year: 2024

- Insufficient Data
- Not Eligible
- Low Income
- Moderate Income

Shaded by: Census Tract, 2022

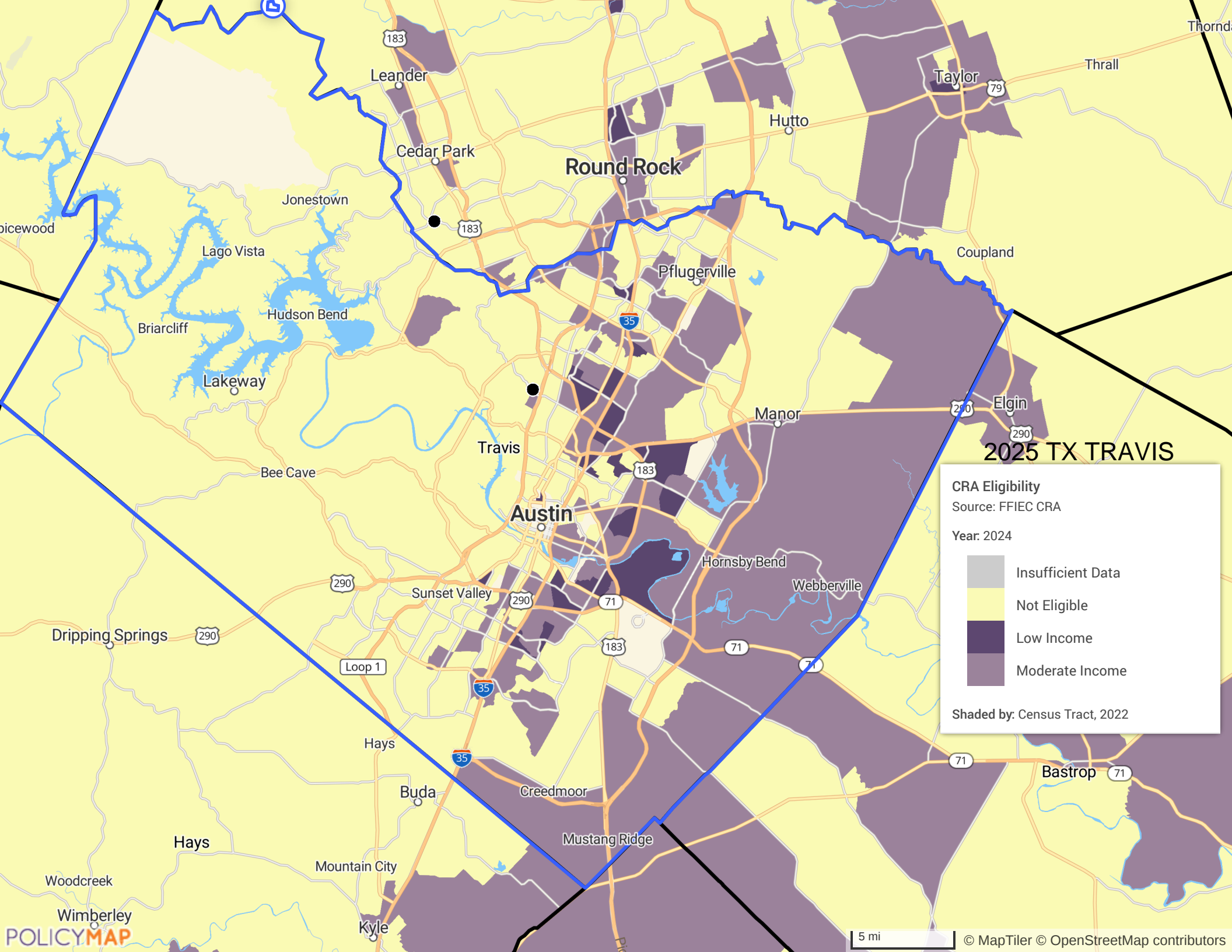


2025 TX TARRANT

CRA Eligibility
 Source: FFIEC CRA
 Year: 2024

- Insufficient Data
- Not Eligible
- Low Income
- Moderate Income

Shaded by: Census Tract, 2022



2025 TX TRAVIS

CRA Eligibility
Source: FFIEC CRA
Year: 2024

- Insufficient Data
- Not Eligible
- Low Income
- Moderate Income

Shaded by: Census Tract, 2022

5 mi

© MapTiler © OpenStreetMap contributors

